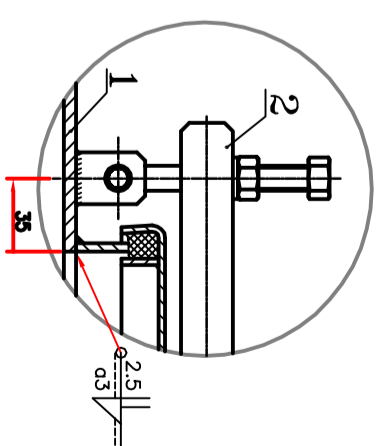
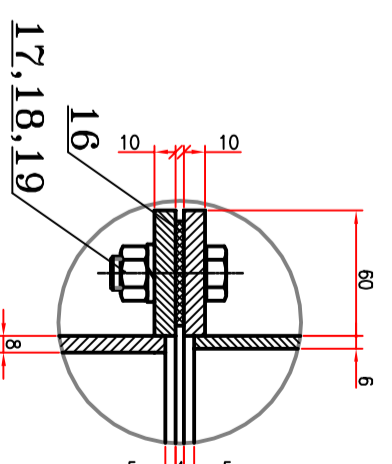


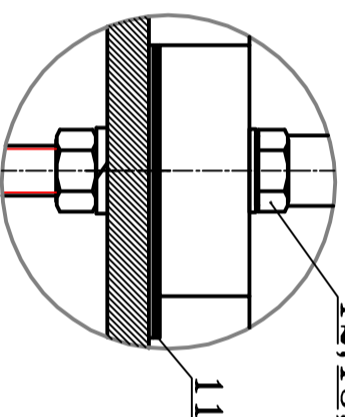
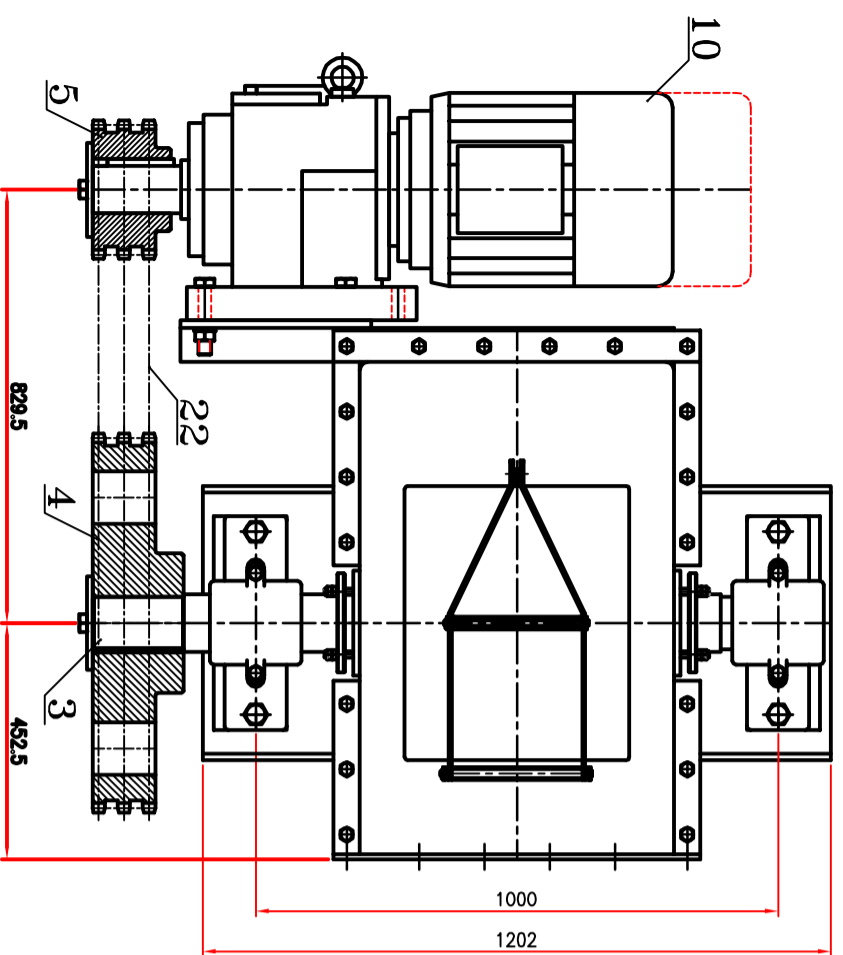
SECTION A-A



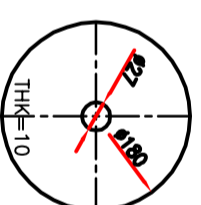
DETAIL "B"
SCALE 1:2.5



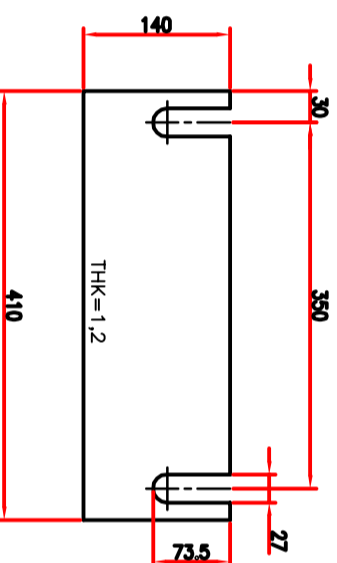
DETAIL "C"
SCALE 1:2.5



DETAIL "D"
SCALE 1:2.5



No. 20
SCALE 1:5



No. 11
SCALE 1:5

- NOTES:**
- 1- All dimensions are in mm unless otherwise specified.
 - 2- All tolerances are according to DIN 7168-m unless otherwise specified.
 - 3- FAG PLUMMER BEARING HOUSING SNV200 , BEARING 22222ESK.TVPB , TWO-LIP SEAL DH522 , LOCATING RING FRM200/13.5(ONLY FOR ONE SIDE(FIX BEARING)) , ADAPTER SLEEVE H322 ,END COVER DKV200, WITH GREASE NIPPLE (NIP.DIN71412-M10x1).

ITEM	QTY.	DESCRIPTION	REF. TO DWG. NO.	Wt(kg)	Wt(kg)	TOTAL	MATERIAL	REMARK
22	1	CHAIN -248-3x90		46.2		993.3		
21	2	BOLT M24x50			8.8		DIN 8187	
20	2	PL. #180-10					DIN 933	
19	18	SPRING WASHER A16					ST37-2	
18	18	NUT M16					FSI	DIN 127
17	18	BOLT M16x45					8.8	DIN 934
16	1	GASKET PLATE 4x50x2250					RUBBER	DIN 933
15	8	WASHER A24					8.8	DIN 125
14	8	SPRING WASHER A24					FSI	DIN 127
13	8	NUT M24					8	DIN 934
12	8	BOLT M24x130					8.8	DIN 933
11	6	SHIM PLATE				4	SK37-2	
10	1	HELICAL GEAR MOTOR 7.5kW , 30RPM	D128-M132M4					FLENDER
9	1	BEARING HOUSING SNV200						FAG SEE NOTE 3
8	1	BEARING HOUSING SNV200						FAG SEE NOTE 3
7	1	SPROCKET	1290-DWG-3-ME-017-0	84.5				
6	2	SEALING	1290-DWG-3-ME-016-0	23.6				
5	1	SPROCKET (Pitch 1.5") ,N=19	1290-DWG-4-ME-015-0	42.6				
4	1	SPROCKET (Pitch 1.5") ,N=57	1290-DWG-3-ME-014-0	34.0				
3	1	DRIVE SHAFT	1290-DWG-4-ME-013-0	105				
2	1	INSPECTION DOOR 400x500	1290-DWG-1-ME-012-0	11.4				
1	1	DRIVE HEAD CASING	1290-DWG-1-ME-011-0	336				

PART LIST

REV.	DATE	FOR REVIEW & COMMENT	MAHARLOUIE	DRAFTING
0				
OWNER:		PROJECT:		TITLE:
				DRAG CHAIN 500 x 16418
				DRIVE HEAD ASSEMBLY
SCALE: 1:10;1:5;1:2.5	SHT. 1 OF 1	REV.0		
FILE NAME:	DOC.No.:			