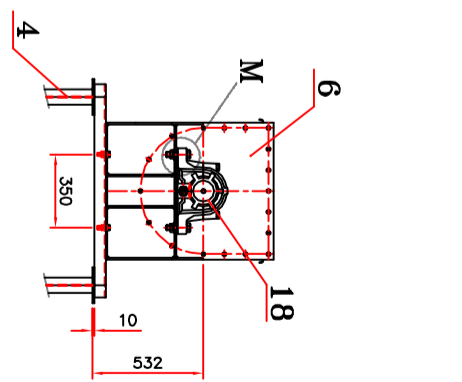
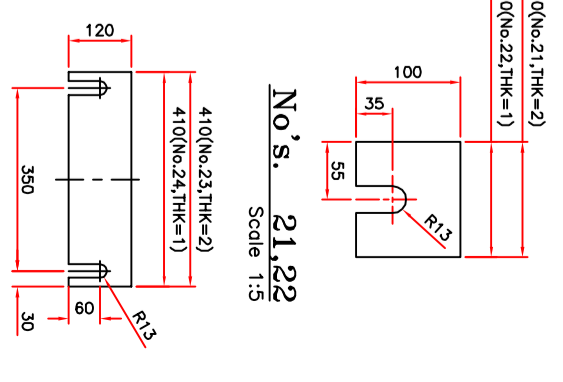


View "A"
Scale 1:25

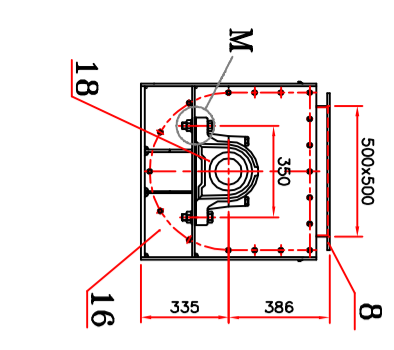


View "F"
Scale 1:25

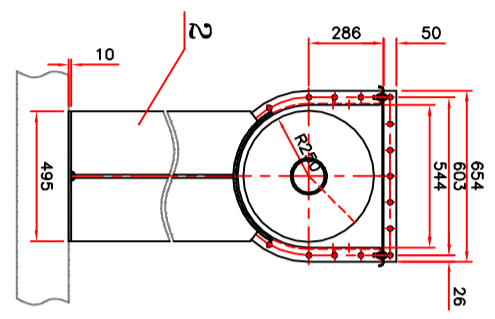


No's. 21,22
Scale 1:5

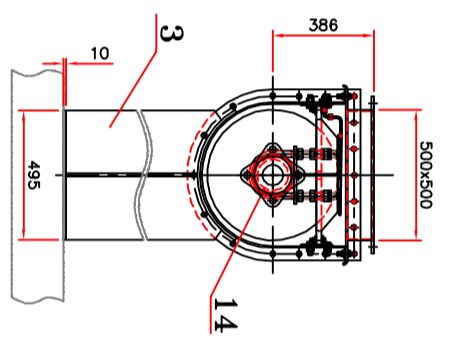
No's. 23,24
Scale 1:10



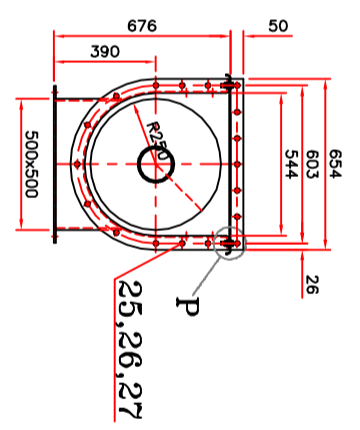
Section B-B
Scale 1:20



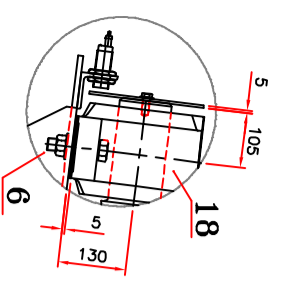
Section C-C
Scale 1:20



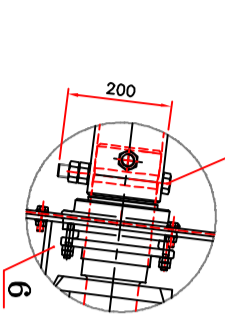
Section N-N
Scale 1:20



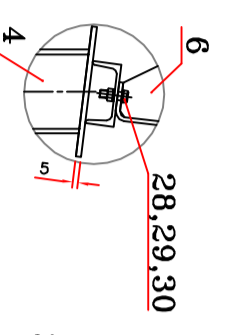
Section D-D
Scale 1:20



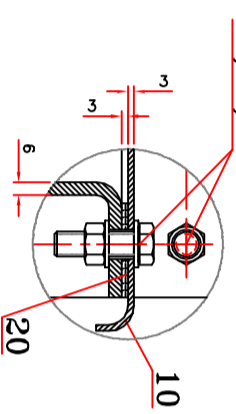
Detail "F"
Scale 1:10



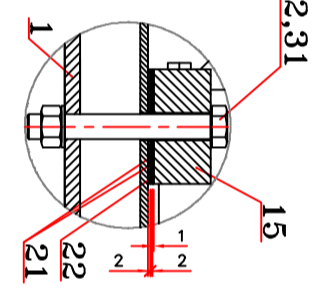
Detail "G"
Scale 1:5



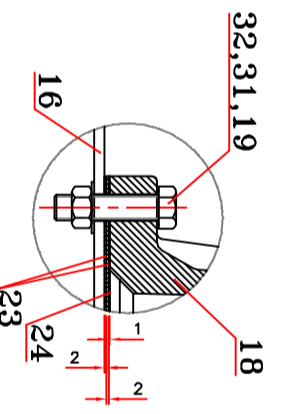
Detail "H"
Scale 1:5



Detail "P"
Scale 1:2.5



Detail "L"
Scale 1:5



Detail "M"
Scale 1:5

NOTES:

- 1- ALL DIMENSIONS ARE IN mm UNLESS OTHERWISE SPECIFIED.
- 2- ALL TOLERANCES ARE ACCORDING TO DIN 7168- m UNLESS OTHERWISE SPECIFIED.
- 3- FAG PLUMMER BEARING HOUSING SNW200 , BEARING 22222ESK.TYPB , TWO-LIP SEAL DH522 , LOCATING RING FRM200/13.5 (ONLY FOR ONE SIDE(FIX BEARING)) , ADAPTER SLEEVE H322 WITH GREASE NIPPLE (NIP.DIN71412-M10x1).

ITEM	QTY.	DESCRIPTION	REF. TO DWG. NO.	WEIGHT(KG)	TOTAL WEIGHT(KG)	MATERIAL	REMARK
33	8	BOLT M24x200		10.9	87.2	DIN 933	
32	16	NUT M24		10	160	DIN 934	
31	12	SPRING LOCK WASHER A24		F51	121.2	DIN 127	
30	2	NUT M16		8	16	DIN 934	
29	2	SPRING LOCK WASHER A16		F51	127	DIN 127	
28	2	BOLT M16x50		8.8	17.6	DIN 933	
27	164	NUT M12		8	1312	DIN 934	
26	164	SPRING LOCK WASHER A12		F51	127	DIN 127	
25	164	BOLT M12x40		8.8	1451.2	DIN 933	
24	2	SHIM PL. 1x120x410		0.8	1.6	SK37-2	
23	4	SHIM PL. 2x120x410		3.1	12.4	SK37-2	
22	4	SHIM PL. 1x100x110		0.3	1.2	SK37-2	
21	8	SHIM PL. 2x100x110		1.4	11.2	SK37-2	
20	1	RUBBER 3x50 L=23m		MOHOREA	1		
19	4	BOLT M24x100		8.8	35.2	DIN 933	
18	2	BEARING HOUSING SNW200		FAG	349		SEE NOTE 3
17	1	FLEXIBLE COUPLING					
16	1	MOTOR FRAME					
15	1	GEARED MOTOR 15 KW . 54 R.P.M					
14	2	MIDDLE BEARING 500 (TYP.)		100	200		
13	1	SCREW Ø500-3616 (TYP.)		166.2	166.2		
12	1	SCREW Ø500-3830 (TYP.)		185	185		
11	1	SCREW Ø500-3611		166.2	166.2		
10	1	TOP COVER (END PART)		63.9	63.9		
9	1	TOP COVER (MIDDLE PART)		72.2	72.2		
8	1	TOP COVER (FRST PART)		82.2	82.2		
7	1	U - FRAME 3.5mm		291.6	291.6		
6	1	END BEARING FRAME (TYP.)		123.4	123.4		
5	2	U - FRAME 4m (TYP.)		601.2	1202.4		
4	1	MIDDLE SUPPORT (TYPE A)		86.3	86.3		
3	1	MIDDLE SUPPORT (TYPE B)		94.2	94.2		
2	1	MIDDLE SUPPORT (TYPE A)		88.3	88.3		
1	1	MOTOR SUPPORT		105.2	105.2		

PART LIST

ITEM	QTY.	DESCRIPTION	REF. TO DWG. NO.	WEIGHT(KG)	TOTAL WEIGHT(KG)	MATERIAL	REMARK
1	1	MOTOR SUPPORT	1124-DWG-3-ME-012-(0HOLD)	105.2	105.2		

FOR REVIEW & COMMENT		DESIGN BY		DRAWN BY		CHECKED BY		APPROVED BY	
DATE	DESCRIPTION	DATE	DESCRIPTION	DATE	DESCRIPTION	DATE	DESCRIPTION	DATE	DESCRIPTION
OWNER: PROJECT: TITLE: SCREW CONVEYOR									
SCALE: 1:50,1:25,1:20,1:10,1:5,1:2.5									
SHT. 1 OF 1									
FILE NAME: DOC.No.: REV.0									